

Hot Rolled Special Steels

Contact:

Overseas offices

Dubai	New York	Singapore
john.mainwaring@uttamgalva.com +971 561306375	stephan.schoop@uttamgalva.com +1-917-2140132	handa@uttamgalva.com +656 5320378

Domestic offices

North Zone	West Zone	South Zone
243, Okhla Industrial Area Phase 3, New Delhi -110020 Mob.: 09810939550	White House, 2nd Floor Opp: Sandvik Asia Ltd. Dapodi, Pune - 411012 Mob.: 09923004851	7-D, 7th Floor, PM Towers, No 37, Greams Road, Chennai – 800066 Mob: 9884264094
134, 1st Floor City Centre Sansar Chand Road Jaipur - 302001 Mob: 09414011196	A Wing, 8th Floor, 805/806, Lokmat Bhawan, Wardha Road, Nagpur – 440012 Contact : 9923388127	Jain Heights, Solous, A -06, 6th Floor, JC Road, 1st Cross, Bangalore-580026 Mob: 9742130241
	Office No. A2, BSQUARE Managed Offices 7th Floor, Shree Krishna Center, Above Crossword, Nr. Mithakali Six Roads, Navrangpura, Ahmedabad-380009	C/O. Modern Distropolis Limited, S. G. Building, NH Bye Pass, Cochin. Kerala Mob.: 8411970408, 08086661660
	409, Sapphire Height Opp. Orbit Mall, AB Road Indore 452010 (MP) Mob: 09755043433, 09979388352	Plot No 5, Road No 1, Jupiter Colony, Sikh Road, Bowenpally near DPS Secunderabad Mob: 9052955222



Uttam Value Steels Limited Uttam House, 69, P D' Mello Road, Masjid Bunder (East), Mumbai – 4000 09.



UTTAM VALUE STEELS LIMITED

Vision

To be a premium global source of high grade value added flat steel products for discerning Customers

Mission

To deliver superior financial results through exemplary business practices

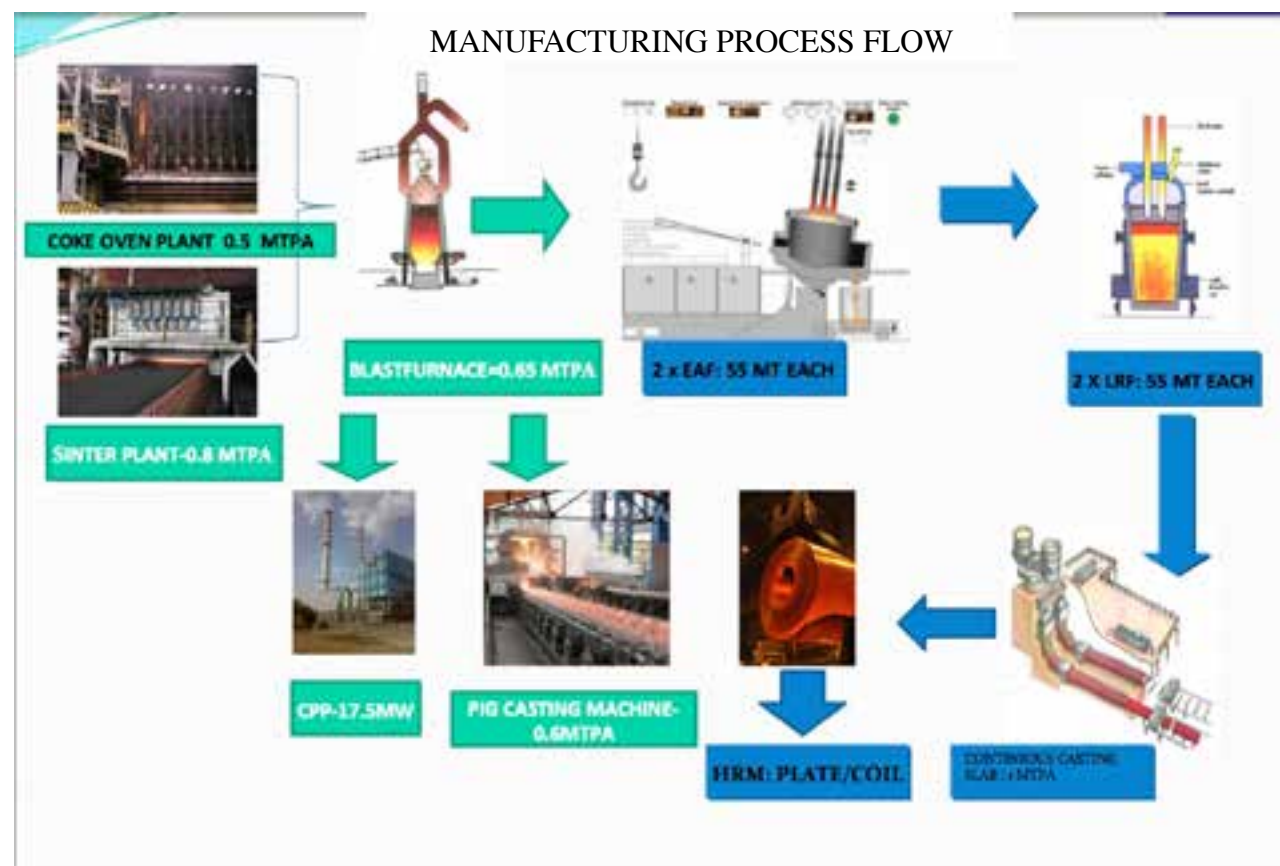
COMPANY OVERVIEW - INTEGRATED STEEL MAKING

Uttam Value Steels Ltd was incorporated in the year 2013. The company took over the erstwhile Lloyds Steel, which began its operations in the year 1994.

The company is in the business of manufacturing high grade hot rolled steel with a capacity of 0.8 Million MT PA. The products are used in a myriad of industries ranging from boilers and pressure vessels, material handling, transmission towers, industrial and mining machinery, Pre Engineered buildings, commercial vehicles to name a few. The steel making facility is supported by our group company, Uttam Galva Metallics Ltd (UGML) for its hot metal requirements. UGML which is located adjacent to the plant has a blast furnace, two coke ovens and a sinter plant.

The company has the facility to produce value added steel in small batch quantities which fulfills the requirement of wide range of customers in the engineering sector.

Apart from being certified to ISO 9000, the company holds other certifications from C.E. (European certificate), energy management system ISO 50001:2011, material testing lab certified to ISO 17025 for NABL.



TYPICAL APPLICATIONS AND GRADES

Material Handling And Mining Equipments

Dozers, Fork Lifts, Dumpers, Excavators, Crushers, Conveyors, Cranes, Wagon Tipplers, Reclaimers, Liner Plates, Bins, Chutes, Hoppers



High Strength with Superior Toughness, Weldability And Abrasion Resistance

BIS	EN	Others	ASTM	Minimum Thk. to width Capability		Thickness Range
-	-	UTTAM-HARD	-	5/900	5/1250	5 & Above
-	-	DIN 17100 ST	-	2.5/900	4/1250	2.5 & Above
		52.3				
IS 2062 E 350 A/BR/BO/C	EN 10025 S 355 JR	-	-	2.5/900	4/1250	2.5 & Above
IS 2062 E 350 A/BR/BO/C	EN 10025 S 355 J2	-	ASTM 572 GR 50	2.5/900	4/1250	2.5 & Above
IS 2062 E 450 A/BR	-	-	-	2.5/900	6/1250	2.5 & Above

Boilers & Pressure Vessels

High temperature & Pressure for super critical Applications

BIS	ASTMv	EN	Minimum Thk. to width Capability		Thickness Range
-	SA 387 GR 11 CLASS 1/2	-	4/900	4.5/1250	4 to 63
-	SA 387 GR 12 CLASS 1/2	-	4/900	4.5/1250	4 to 63
-	SA 387 GR 22 CLASS 1/2	-	4/900	5/1250	4 to 63
-	15M03/16M03	-	3/900	5/1250	3 to 63 mm
-	A-204 A	-	4/900	5/1250	4 & Above

Moderate Temperature & Pressure Applications

BIS	SAE/ASTM	EN	Minimum Thk. to width Capability		THICKNESS RANGE
-	ASTM A-516 GR 55	-	3/900	3.5/1250	3 & Above
IS 2041 R 220	ASTM A-516 GR 60	-	3/900	3.5/1250	3 to 63 mm
IS 2041 R 260	ASTM A-516 GR 70	-	3/900	5/1250	3 to 63 mm

High Temperature & Pressure Applications

BIS	SAE/ASTM	EN	Minimum Thk. to width Capability		THICKNESS RANGE
IS 2002 GR I	-	-	2 X 900	3 X 1250	2 & Above
IS 2002 GR II	ASTM A-515 GR 60	-	2 X 900	3.1 X 1250	2 & Above
-	ASTM A-515 GR 70	-	3 X 900	5 X 1250	3 & Above

Low & Intermediate Tensile Strength for Pressure Vessel Applications

BIS	SAE/ASTM	EN	Minimum Thk. to width Capability		THICKNESS RANGE
-	ASTM A-285 GR C	-	3 X 900	3.5 X 1250	3 & Above

Line Pipe

For Oil and Gas Transpotations

GRADES	Minimum Thk. to width Capability		THICKNESS RANGE
API 5L X-42	4/900	4/1250	4 & Above
API 5L X-46	4/900	5/1250	4 & Above
API 5L X-52/60/65	5/900	6/1250	5 & Above
API 5L X-70	5/900	6/1250	5 & Above



LPG Cylinders

BIS	EN	SAE/ASTM	Minimum Thk. to width Capability		THICKNESS RANGE
IS 6240-2008 A/B	EN:10028-2 P235	ASTM A - 285 GR-B	2.5/900	2.9/1155	2.5 & Above

Chains for Ship Anchor, Slings and industrial Applications

Grades	BIS	ASTM	Minimum Thk. to width Capability		THICKNESS RANGE
EN-18, EN-19, EN-24	IS1570	SAE 1035 /1040 /1055 /1060	5/900	8/1250	5 & Above
			3.5/900	5/1250	3.5 & Above
			4/900	6/1250	4 & Above



Transmission & Telecom Towers

Tower Base & Body, Medium to High Strength With Superior Weladability

BIS	EN	SAE/ASTM	Minimum Thk. to width Capability		THICKNESS RANGE
IS 2062 E 350 A/BR/BO/C	EN 10025 S 355 J2	ASTM 572 GR 50	3/900	5/1250	3 & Above
IS 2062 E 450 A/BR	EN 10025 S 460	ASTM 572 GR 65	2.5/900	6/1250	2.5 & Above



Automotive

HCV, MCV, LCV – Chassis Components, Structural Members, Wheels, Clutch Parts

BIS	JIS	OTHERS	Minimum Thk. to width Capability		THICKNESS RANGE
-	-	E-34	2.5/900	3.8/1250	2.5 & Above
-	-	E-38	3/900	5/1250	3 & Above
-	-	E-40	2.7/900	4/1250	2.7 & Above
-	-	E-42	3/900	6/1250	3 & Above
-	-	BSK-46/E-46	3/900	6/1250	3 & Above
IS 5986 GR 255		-	2.5/900	3/1250	2.5 & Above
IS 2062 E 450 A/BR		-	2.5/900	6/1250	2.5 & Above
		-	2.5/900	3/1250	2.5 & Above
-	JIS G3113 SAPH 440	-	3/900	5/1250	3 & Above



Special Applications - The Blanking/ CR Application

APPLICATIONS	GRADES	BIS	JIS	Minimum Thk. to width Capability		THICKNESS RANGE
AUTO GEAR SHAFTS , SPINDLES , PISTON	16 MnCr 5			4/900	6/1250	4 & Above
	20 MnCr 5			4/900	6/1250	4 & Above
SPRING STEEL	50 Cr V 4			3.5/900	5/1250	3.5 & Above
AUTO PUSH RODS	42 Cr Mo4			3.5/900	5/1250	3.5 & Above

Carbon Steel Grades

Chain Sprockets, Wheel Rim Hubs, Cutting Tools,

Springs, Industrial Blades /Saws and for Cold Rolling Application

APPLICATION	BIS	SAE/ASTM	Minimum Thk. to width Capability		THICKNESS RANGE
LOW CARBON	C-15/C-20	SAE 1015/1020	2.5/900	3/1250	2.5 & Above
MEDIUM CARBON	C-30/C-35	SAE 1030/1035	2.5/900	4/1250	2.5 & Above
MEDIUM CARBON	C-40/C-45/MC11	SAE 1040/1045	2.7/900	4/1250	2.7 & Above
MEDIUM CARBON	C-50/C-55/MC12	SAE 1050/1055	2.7/900	5/1250	2.7 & Above
MEDIUM CARBON	C-60	SAE 1060	2.7/900	4/1250	2.5 & Above
HIGH CARBON	C-62/C-65	SAE 1040/1045	2.7/900	6/1250	2.7 & Above
HIGH CARBON	C-70/C-75 /C-80/C-85	SAE 1040/1045	FOR C75/C80-3.5/900, C85-4/900,C80/C85 -10/1250		3.5 & Above



Atmospheric Corrosion Resistant Steel for Structural and Heat Exchangers

JIS	ASTM	Minimum Thk. to width Capability		THICKNESS RANGE
	ASTM 588 GE A/B	3.15/900	5/1250	3.15 & Above
JIS 3114 490 BW		3.15/900	5/1250	3.15 & Above
JIS -G3125 SPA		1/900	1 mm in CR form 2.5 mm in HR 900 TO 1250	



Chequered Coil / Sheets

BIS	EN	SAE/ASTM	Minimum Thk. to width Capability		THICKNESS RANGE
IS 3502	-	-	5/900	10/1250	5 mm & Above



Building & Construction

Pre Engineered Building – Columns, Rafters, Purlins, Side Wall Girts & industrial flooring

BIS	EN	JIS	ASTM	Minimum Thk. to width Capability		THICKNESS RANGE
IS 2062 E 350 A/BR/BO/C	EN 10025 S 355 JR	-	-	2.5/900	4 /1250	2.5 & Above
IS 2062 E 350 A/BR/BO/C	EN 10025 S 355 J2	-	ASTM 572 GR 50	2.5/900	4/1250	2.5 & Above
IS 2062 E 450 A/BR	-	-	-	2.5/900	6/1250	2.5 & Above
IS 2062 E 250 A/B	EN 10025 S 275 JO	JIS G 3101 SS 400	ASTM A 36	2.5/900	4/1250	2.5 & Above
IS 2062 E 250 C	EN 10025 S 275 J2	JIS G 3106 SSM 400C	ASTM A 36	2.5/900	4/1250	2.5 & Above
IS 2062 E 250 -Cu	-	-	ASTM A 36-Cu	5/900	10/1250	5 & Above



Waviness tolerance as per ASTM A6 :

Permitted variation for flatness (in mm)	Permitted variation in waviness in mm, When number of waves in 4000 mm is						
	1	2	3	4	5	6	7
8	8	6	5	3	3	2	2
10	10	8	5	5	3	2	2
11	11	8	6	5	3	3	2
13	13	10	8	5	5	3	2
14	14	11	8	6	5	3	2
16	16	13	10	6	5	3	2
17	17	13	10	8	5	5	2
19	19	14	11	8	6	5	2
21	21	16	11	8	6	5	2
22	22	17	13	10	6	5	2
24	24	17	13	10	8	6	5

SERVICE CENTRE FACILITIES

	HR CTL 1	HR CTL 2	Narrow CTL	HR SLITTER
Thickness (mm)	2 - 7	6 to 25	2 to 12	2 - 12
Width (mm)	400 - 1250	900- 1250	100 - 600	100 - 600
Length Max (mm)	12000	12000	12000	
Length , Min (mm)	1700	2500	2600	

Marking & Inspection

Marking	Heat No/ Coil NO / Size / Material Grade/Specification / In Case of IS Specification, ISI Monogram with number will be marked
Video Jet Printing	Can be Provided for Plates
Third Party Inspection	Either Customer appointed agency or SGS appointed by UVSL.



TOLERANCES

Thickness, Width & Length Tolerances :

Nominal Thicknesses in mm	Thick tolerances		Width tolerances	Length tolerances
	for all width As per ASTM A6	for all width As per IS 1852	for all width	for all width
2 to < 16	+0.30/-0.30	+0.30/-0.30	+20/-0	+30/-0
16 to 20	+0.80 / -0.30	+5% / -5%	+20/-0	+30/-0
20 to < 25	+0.90 / -0.30	+5% / -5%	+20/-0	+30/-0
28	+1.0 / -0.30	+5% / -5%	+20/-0	+30/-0
30	+1.10 / -0.30	+5% / -5%	+20/-0	+30/-0
32	+1.20 / -0.30	+5% / -5%	+20/-0	+30/-0
35	+1.30 / -0.30	+5% / -5%	+20/-0	+30/-0
38	+1.40 / -0.30	+5% / -5%	+20/-0	+30/-0
40	+1.50 / -0.30	+5% / -5%	+20/-0	+30/-0
45	+1.60 / -0.30	+5% / -5%	+20/-0	+30/-0
50	+1.80 / -0.30	+5% / -5%	+20/-0	+30/-0
55	+2.0 / -0.30	+5% / -5%	+20/-0	+30/-0
60	+2.30 / -0.30	+5% / -5%	+20/-0	+30/-0
63	+2.50 / -0.30	+5% / -5%	+20/-0	+30/-0

Flatness & Camber Tolerances :

Nominal Thicknesses in mm	Flatness as per ASTM A6 for carbon steel			Flatness as per ASTM A6 for alloy steel			Camber As per IS 5986 (% of length)	Camber As per ASTM A6	
	for width 900	900 - 1200	1200- 1250	for width 900	900 - 1200	1200- 1250		for carbon steel (in mm)	for alloy steel (in mm)
2 to < 6	14	19	24	21	29	35	0.5	500	250
6 to < 10	13	16	19	19	24	29	0.5	500	250
10 to 12	13	14	16	19	22	24	0.5	500	250
12 to < 16	13	14	16	16	19	22	0.5	500	250
16 to < 20	11	13	14	16	19	22	0.5	500	250
20 to < 25	11	13	14	16	19	22	0.5	500	250
25 to < 50	10	13	13	14	13	19	0.5	500	250
50 to < 63	8	10	11	13	14	18	0.5	500	250

SUPPLY CONDITIONS

HR Coils	HR CTL	HR SLITTER-1	HRSLITTER-2	NARROW CTL	PLATES	REMARK(S)
Edge Condition	Mill Edge*	Mill Edge	Resonable Free from Burr		Resonable Free from Burr	Mill Edge
Marking	Heat No./Coil NO / Size / Material Grade/Specification /In Case of IS Specification, ISI Monogram with number will marked					
Video Jet Printing	NA	Yes	NA	NA	Yes	NA
Telescopicity	100mm max, Aiming at 50 mm	NA	10mm, MAX	10mm, MAX	NA	NA
Fish End / Tail End	500 mm each max	Free form Fish End / Tail End				
Third Party Inspection	Either Customer appointed agency or SGS appointed by UVSL.					

* Limited Quantity up to 3 mm can be supplied in Trimmed edge

GRADES & MECHANICAL PROPERTIES

SL No.	UVSL GRADE	EQV.SPEC./GRADE	UTS (Mpa)	YS (Mpa)	% EL	BEND	OTHERS
1	DRAWING GRADE/COLD ROLLING						
	UVSDDQ05	SAE1015 / C-15					
	UVSDDQ06	SAE1020 / C-20					
2	FORMING GRADES						
	UVSCFG01A	IS 1079 O/ HR1/D/ HR2/DD/HR3 IS5986 165/205 (eq.Fe-330) JIS G 3113 SAPH310 ASTM 283 Gr A /B	440 Max.	-	29 Min. on GL=50 mm	t	FOR HR3 GRADE UTS-400 MPA MAX
	UVSCFG01B/C	IS 1079 O/ HR1/D/ HR2/DD/HR3 IS5986 165/205 (eq.Fe-330) JIS G 3113 SAPH310 ASTM 283 Gr A /B	420 Max.	-	31 Min. on GL=50 mm	t	
	UVSCFG02/3	IS5986 235/255 (eqvt to Fe410) JIS G3113 SAPH370/400 ASTM 283 GR C/D	410 Min.	255 Min.	24 Min.	t	
	UVSCFG04	IS5986 235/255 (eqvt to Fe410) JIS G3113 SAPH370/400 ASTM 283 GR C/D	410 Min.	250 Min.	23 Min.	2t	
3	SPECIAL FORMING GRADE :						
	UVSCFM01	E-34 IS 5986-325	393 - 490	334 - 412	27 Min.	0.5 t	
	UVSCFM02A/B	E-38 IS 5986-355 JIS G3113 SAPH440	442 - 559	373 - 461	25 Min.	0.5 t	
	UVSCFM02C	ASTM A656 GR50 Type 7	470-630	355	23 MIN	1 t	
	UVSCFM03	E-46/E42 BSK 46 IS 5986-420 JIS G3134 SPFH 490	490 - 610	450 - 530	21 Min.	1 t	
4	LPG CYLINDER GRADES :						
	UVSLPC01A	IS 6240 I JIS G3116 SG255	350 - 450	240 Min.	25 Min.	t	ECV - 13.5 mm Min.
	UVSLPC01B		440 Min.	295 Min.	26 Min.	1.5 t	
5	CHEQUERED GRADE :						
	UVSCHQ01	IS3502 ASTM A786	410 Min.	250 Min.	23 Min.	2t	

GRADES & MECHANICAL PROPERTIES

SL No.	UVSL GRADE	EQV.SPEC./GRADE	UTS (Mpa)	YS (Mpa)	% EL	BEND	OTHERS
6	API PIPE GRADES :						
	UVSPTM01	API 5L GR.B	414-758	241-448	28 Min.	2t	Impact 41J at 0°C
		API 5L X-42					
	UVSPTM02	API 5L X-46	434-758	317-524	28 Min.	2t	Impact 41J at 0°C
	UVSPTM03	API 5L X-52	455-758	359-531	25 Min.	2t	Impact 41J at 0°C
		API 5L X-56	490-758	386-544	25 Min.	2t	
	UVSPTM04	API 5L X-60	517-758	414-565	25	2t	Impact 41J at 0°C
		API5CT J-55 PSL					
	UVSPTM05	API 5L X-65	531-758	448-600	22 Min.	2t	Impact 41J at 0°C
	UVSPTM06	API 5L X-70	565-758	483-621	22 Min.	2t	Impact 41J at 0°C
7	STRUCTURAL & GENERAL ENGG. :						
	UVSSTRO1A/B	BSEN10025 S275JR	410-560	275	21 Min.	-	-
		ASTM A36 /S235JR					
		JIS G3101 SS330/SS400/ DIN37.2					
		IS2062 E250 A/BR/BO/C					
	UVSSTRO1C/D	BSEN10025 S275J0/J2	410-560	275 Min.	21 Min.	-	-
		S235J0/J2					
	UVSSTRO1E	ASTM A653 SS GR50					FOR GALV. APPLICATIONS
	UVSSTRO2A	BSEN10025 S235JR/J0 ≥ 4mm to 63 mm					For PGCIL % Si-0.17-0.22 %Cu-0.05max, Cr-0.05max % Ni-0.02max, Mo-0.02max % Cr+Ni+Mo-0.08 max Impact As per relevant spec. For > 32 mm plate Ca-15.25
		JIS G3101 SS330/ DIN37.2	360-510	235 Min.	24 Min.	-	
		S275JR/A36					
		JIS G3101 SS400					
	UVSSTRO2B	IS2062 E250 A/BR	410 min	250 Min.	21 min		
		EN10025 S275JR					
	UVSSTRO3A/B	IS2062 E250 A/BR/BO	410-560	275 Min.	21 Min.	-	
		JIS G3101 SS400					
		ASTM A36					
		EN10025 S275JR					
	UVSSTRO3C	EN10025 S275J0					
		EN10025 S275 J2	430-550	275 Min.	21 Min.		
	UVSSTRO4	IS2062 E250 C	410-560	275 Min.	21 Min.	-	
		EN10025 S235J2					

GRADES & MECHANICAL PROPERTIES

SL No.	UVSL GRADE	EQV.SPEC./GRADE	UTS (Mpa)	YS (Mpa)	% EL	BEND	OTHERS	
8	STRUCTURAL MICRO ALLOYED GRADES							
						—	For PEB ≤12 mm C.T. 630°C	
	UVSSTMO1A/B	ASTM572 GR50 TYPE 1	450 Min.	345 Min.	21 Min.		& ID/OD uncolled 40 mtr	
		(with or without impact at -20°C)					(SLIT ORDER)	
	UVSSTMO1C	ASTM572 GR50	450 Min.	345 Min.	21 Min. GI=50 mm	—		
	UVSSTMO1D	ASTM572 GR50	450 Min.	345 Min.	21 Min. GI=50 mm	—		
		IS2062 E350 A/BR						
	UVSSTMO2A	ASTM572 GR50	450 Min.	345 Min.	21 Min. GI=50 mm	—		
	UVSSTMO2B	ASTM A572 GR 50	450 Min.	345 Min.	21 Min. GI=50 mm	—		
	UVSSTMO3	DIN-17100 St-52.3	490 Min.	355 Min.	22 Min.	2t	FOR GALV. APPLICATIONS % Si= 0.03 max Impact As per relevant spec.	
		EN10025S355J0/JR/J2G3					For PGCIL % Si-0.17-0.22 %Cu-0.05max, Cr-0.05max %Ni-0.02max, Mo-0.02max %Cr+Ni+Mo-0.08 max	
	UVSSTMO4A	DIN-17100 St-52.3(>6 mm)	510-610	355	20	2t		
		BS-4360 GR.50C		Min.	Min.			
		ASTM572 GR50						
		IS2062 E350 A/BR/BO/C						
		JIS G3101 SS490						
		EN10025S355J0/JR/J2						
	UVSSTMO5	DIN17100 ST52.3	539 Min.	392 Min.	20 Min.	2t		Impact 27 J AT 0°C
	UVSSTMO6 A/B	IS2062 E450 A/BR	570-720	450 Min.	20 Min.	2.5t		Impact As per relevant spec.
		IS2062 E410 A/BR						
		DIN 17100 ST 60.2						
		JIS G3101 SS540 (> 10 mm)						
	UVSSTMO6C	ASTM572 GR60/65	570-720	450 Min.	20 Min.	2.5t	Impact As per relevant spec.	

GRADES & MECHANICAL PROPERTIES

SL No.	UVSL GRADE	EQV.SPEC./GRADE	UTS (Mpa)	YS (Mpa)	% EL	BEND	OTHERS
9	HOT FORMING MICRO ALLOYED GRADES						
	UVSHFM01	IS2062E350, WIR32	510 Min.	355 Min.	22 Min.	2t	
	UVSHFM02	SHAES208 REV G	517-689	414 Min.	20 Min.	2t	Impact 20 J AT -40°C
	UVSHFM03	IS2062E450, WIR60 (WHEELS)	570-720	450 Min.	20 Min.	2t	
10	MEDIUM CARBON (VARIOUS APPLICATIONS) :						
	UVSMCG01	SAE-1030 /C-30	500-600		21 min	--	HARDNESS - HRB-74 min
	UVSMCG02	SAE-1035/C-35	520-620		20 min	--	--
	UVSMCG03	SAE-1040/C-40	580-680	55% of UTS	18 min		
	UVSMCG04A/B	SAE1045/C-45/ MC11	630-710	55% of UTS	15 min	--	
	UVSMCG05	C-50	660 Min.	55% of UTS Min.	13 Min.	--	
		SAE1050					
	UVSMCG06	SAE-1055	720 Min.	55% of UTS Min.	11 Min.	--	
		MC-12					
		En-9					
		C-55					
	UVSMCG07	SAE 1060/C-60	750	55% of UTS	11		
	UVSMCG08	SAE 1065/C-62/C-65	750 Min.	55% of UTS	10 Min	--	
	UVSMCG09	SAE 1070/C-70	--	--	--	--	
	UVSMCG10	SAE 1075/C-75	--	--	--	--	HARDNESS= 200 BHN MIN
	UVSMCG11/12	SAE 1080/C-80/ C-85	--	--	--	--	HARDNESS= 200 BHN MIN
11	PRESSURE VESSELS:						
	UVSHPC01A	IS-2002 GR. I	360-480	235 Min.	24 Min.	2t	
	UVSHPC01B	IS-2002 GR. II	410-530	265 Min.	22 Min.	2t	
		ASTM 515 GR60					
	UVSHPC02C/P	ASTM A-516 GR. 60	415-550	220 Min.	25 Min.	-	
		ASTM A-516 GR. 55					
		IS2041 R220					
	UVSHPC03A/B	ASTM A-516 GR. 70	485-620	260 Min.	21 Min.	2t	
		IS2041 R260					
	UVSHPC03C	ASTM A-515 GR. 70	485-620	260 Min.	21 Min.	2t	

GRADES & MECHANICAL PROPERTIES

SL No.	UVSL GRADE	EQV.SPEC./GRADE	UTS (Mpa)	YS (Mpa)	% EL	BEND	OTHERS
12	HIGH PRESSURE VESSEL, LOW ALLOY STEEL (Cr-Mo)						
	UVSLAS01HT	SA-387 Gr.11 Class1 /2	515-690 For CL2, 415-585 For CL1	Min. 310 for CL2 & 240 for CL1	22 Min.	--	
	UVSLAS02HT	SA-387 Gr.12 Class1 /2	450-585 for CL2, 380-550 for CL1	Min. 275 for CL2 & 230 for CL1	22 Min.	--	
	UVSLAS03HT	SA-387 Gr.22 Class1 /2	515-690 for CL2, 415-585 For CL1	Min. 310 for CL2 & 205 for CL1	18 Min.	--	
	UVSLAS04A/B		490 Min.	355 Min.	22 Min.	0.5 t	
		JISG3125 SPAC/ SPA-H→					
		IRSM-41					
		CORTEN-A					
	UVSLAS04C	15 MO3 / 16 MO3	440-590	270 min	23 min	--	--
	UVSLAS05A						
	UVSLAS05B	ASTM A204A	440-590	270 min	23 min	--	--
13	LOW ALLOY STEELS(VARIOUS APPLICATION SUCH AS ENGG., STRUCTURAL, ARMOURS) -						
		UVSLAS07	UTTAM HARD	--	--	--	200 BHN min
	UVSLAS08	50 Cr V4 (M)	--	--	--	--	--
	UVSLAS09	42 Cr Mo4	--	--	--	--	--
		En19					
		SAE 4140					
	UVSLAS10	GOST 30X TCA	--	--	--	--	--
		ASTM A588 GR. A/B					
	UVSLAS11A/B		490/610	365 Min.	21 Min.	--	27 J at 0°C
	UVSLAS11C	JISG3114 SMA490BW	490/610	365 Min.	21 Min.	--	27 J at 0°C
	UVSLAS12	EN 24	--	--	--	--	--
	UVSLAS13	15Cr13Mo6	--	--	--	--	--
	UVSLAS14	EN18	--	--	--	--	--
	UVSLAS15	15Cr3	--	--	--	--	--
	UVSLAS16A	16MnCr5	--	--	--	--	--
	UVSLAS16B	20MnCr5	--	--	--	--	--
	UVSLAS18	SCM 435	--	--	--	--	--
	UVSLAS19	BSEN10025S355J2W	510 min	355 min	21 min	--	impact 27J at -20°C

CERTIFICATIONS & ACCREDITATIONS



Certi

